

D191

Threaded DZR Ball Valve

PN25

Features & Benefits

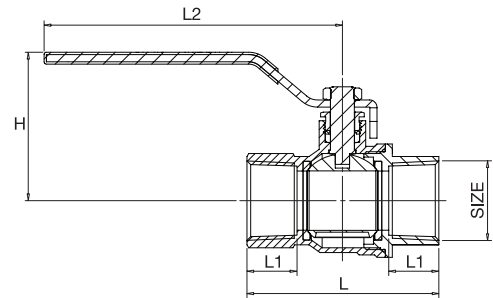
- Designed to be light, compact and easy to install and operate
- Features improved leak resistance and reduced risk of damage from over tightening
- Tested by BSI and complies with essential requirements of BS EN 331:1998
- Also suitable for natural gas applications



Materials

PART	MATERIAL	QUANTITY
Hex-Nut	Dacromet Plated Steel	1
Handle Sleeve	PVC Yellow	1
Handle	Dacromet Plated Steel	1
Packing Nut	Brass CW617N	1
Packing Gland	PTFE (WRAS Approved)	1
Body	DZR Brass CW602N	1
Ball	DZR Brass Chrome Plated	1
Seats	PTFE (WRAS Approved)	2
O-Ring	NBR with BS EN 549 Approval	1
Bonnet	DZR Brass CW602N	1
Stem	DZR Brass CW602N	1

Dimensional Drawing



All dimensions are nominal.

Dimensions & Weights

SIZE (inch)	WEIGHT (kg)	L (mm)	L1 (mm)	L2 (mm)	H (mm)
1/4	0.152	46	12	89	41
3/8	0.136	46	12	89	41
1/2	0.205	59	15.5	98.5	48
3/4	0.302	67	17	98.5	51
1	0.511	80.5	21	125	63
1 1/4	0.890	94	23	140	78
1 1/2	1.292	102	23	140	83.5
2	2.238	124	26.5	165	97.5

Pressure/Temperature Ratings

Non Gas application

TEMPERATURE (°C)	-10 to 100	110
PRESSURE (BAR)	25	23.5

Intermediate pressure ratings shall be determined by interpolation.

Natural Gas application

TEMPERATURE (°C)	-20 to 60
PRESSURE (BAR)	5

Intermediate pressure ratings shall be determined by interpolation. Gas approved to BS EN 331:1998

PRESSURE RATING: PN25

TEMPERATURE OPERATING RANGE: Non Gas -10 to 110°C, Gas -20 to 60°C

UK END CONNECTION: Taper threaded to BS EN 10226-2 (ISO 7-1) formerly BS 21

US END CONNECTION: ANSI B1.20.1:1983 (please add suffix AT to denote American Thread)

OPERATOR: Lever

SPECIFICATION: Quarter Turn, PTFE Seats and Stem Seal.

Tested by BSI and complies with the essential requirements of BS EN 331:1998.