

## FM276 - PN16 F277 - CLASS 125

Ductile Iron Strainer DN50 - DN200

### Features & Benefits

- Scale and dirt in piping systems causes endless trouble and frequently serious damage to pipeline equipment.
- Installation of Crane strainers will help eliminate the problems caused by foreign matter within piping systems
- The FM276 offers the integrity of manufacture, quality and reliability which are the hallmarks of all Crane products
- Cap tapped and plugged for drain
- Stainless steel strainer element

### Materials

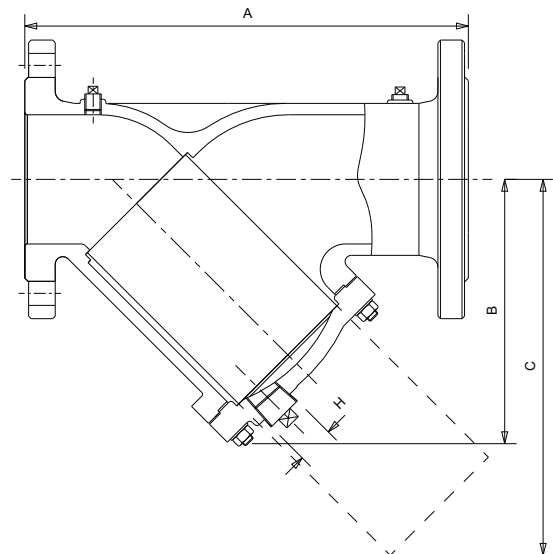
PART	MATERIAL
Body	Ductile Iron BS EN 1563 EN-GJS-450-10
Cap	Ductile Iron BS EN 1563 EN-GJS-450-10
Gasket	Asbestos Free
Screen	Stainless Steel AISI Type 304
Drain Plug	Malleable Iron
Test Point Plug Rc 1/4	Malleable Iron
Studs	Cast Iron
Bolts	Ductile Iron
Bolts	Cast Iron

### Dimensions & Weights

SIZE (mm)	WEIGHT (kg)	A (mm)	B (mm)	C (mm)	H (Rc)	kV
50	10	230	139.2	197	1/2"	58
65	14	290	158.6	227	1"	89
80	18	310	177.5	256	1"	127
100	24	350	197.6	293	1 1/2"	180
125	37	400	269.6	362	2"	268
150	50	480	296.8	407	2"	356
200	89	600	363.4	513	2"	630



### Dimensional Drawing



### Pressure/Temperature Ratings - FM276

TEMPERATURE (°C)	-10 to 120	200
PRESSURE (BAR)	16	12.8

### Pressure/Temperature Ratings - F277

TEMPERATURE (°C)	-10 to 65	230
PRESSURE (BAR)	13.8	8.6

Intermediate pressure ratings shall be determined by interpolation.

**PRESSURE RATING:** FM276: PN16 / F277: Class 125

**TEMPERATURE OPERATING RANGE:**

FM276: -10 to 200°C

F277: -10 to 230°C

**UK END CONNECTION:** Flanged BS EN 1092-2: PN16 Raised face

**US END CONNECTION:** Flanged Class 125 BS1560

- Section 3.2/ ANSI B16.1 Flat Face

### SPECIFICATION:

Strainers are supplied with a stainless steel perforated strainer element. The mesh screen diameter hole sizes are as follows: DN50 - DN200 1.5mm diameter.

This product is suitable for use on Group 2 liquids only, as defined by the Pressure Equipment Directive 97/23/EC and Article 13 of 2014/68/EU.\* Bosses drilled, tapped and plugged.

\* See page 251 for more information